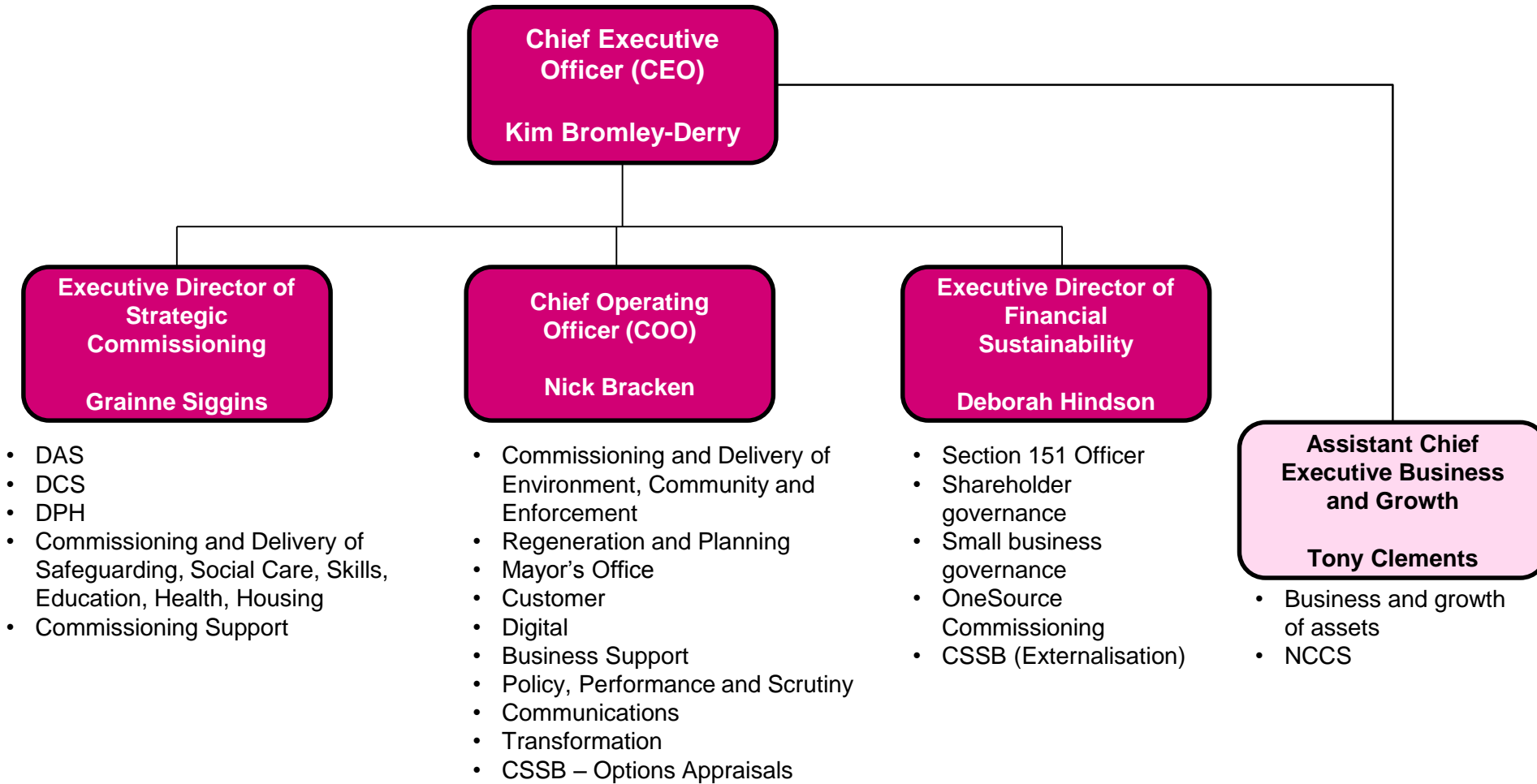


SLT Arrangements

February 2018

Executive Leadership



Note: Daniel Fenwick will retain statutory reporting line to the CEO and will be part of the SLT where appropriate

Chief Operating Officer (COO)

Nick Bracken

Interim Director of Environment and Community
Simon Letchford

- Commissioning of Waste
- Commissioning of Highways and Traffic
- Commissioning of Community Neighbourhoods and Leisure
- Commissioning of Housing Management
- Commissioning of Catering and Cleaning Services (NCCS)
- Delivery Unit Public Space
- Delivery Unit RMS
- Delivery Unit Resident Service Management

Interim Director of Enforcement
Matthew Hooper

- Commissioning of Enforcement, Public Space and Housing
- Delivery Unit YOT
- Delivery Unit Specialist Operations
- Delivery Unit Strategic Operations
- Delivery Unit Private Housing and Enforcement

Director of Customer and Strategic Services
Douglas Trainer

- Mayor's Office
- Delivery Unit Policy, Performance and Scrutiny
- Delivery Unit Communications
- Delivery Unit Business Support
- Delivery Unit Customer & Council Tax and Benefits
- Delivery Unit Community Neighbourhoods

Interim Director of Regeneration and Planning
Jane Sherwood

- Physical Regeneration
- Economic Regeneration
- Planning
- Building Control
- Infrastructure

Chief Digital Transformation Officer (vacant)

- Delivery Unit Digital Services
- Transformation and Continuous Improvement

Senior Leadership Team

Commissioning & Delivery:
Social Care, Adults, Children's,
Health and Education
Commissioning Support

**Executive Director
of Strategic
Commissioning**
Grainne Siggins

**Interim Director
of
Commissioning
Support Unit**
Colin Ansell

**Interim Director
of
Commissioning
Health, Housing
& Social Care**
Elizabeth
Saunders

**Interim
Director of
Operations
Adult Social
Care**
Tony Dailide

**Director of
Public Health**
Meradin
Peachey

**Director of
Operations
Children's
Social Care &
Safeguarding**
Jacquie Burke

**Director of
Delivery,
Compliance &
Transformation
(Fixed Term)**
Tony Jobling

**Director of
Commissioning
Education and
Skills**
Jane Moon

- Commissioning support activities for all services covering brokerage, quality assurance, business systems and contract management
- Commissioning of Policy, Performance and Scrutiny
- Commissioning of Communications

Commissioning of:

- CAA
- Homelessness
- Public Health and DSV
- Adults and Health
- Children's Health
- Social Care
- Business Support, Customer Operations and Digital Services

Delivery units of:

- Delivery Units of Homelessness
- CAA
- Every Child
- Early Years

Families First
Programme Manager

Finance Transformation

Delivery units of:

- Assessment and Care Management
- Mental Health

- Public Health

- Safeguarding
- Triage
- Early Help
- Corporate Parenting

- School Nursing
- Health Visitors
- Family Nurse Partnerships
- Enablement
- Provider lead for ASC - ACS

Commissioning of:

- Learning and Achievement
- SEND
- Education Access
- Business Development

Delivery units of:

- Debden
- Fair Play
- Extended Learning